



FLEMING
VERANDAS



WEINOR AWNINGS COLLECTION



Welcome to Fleming Verandas

Founded in 2020 with a strong belief in traditional, honest values, Fleming Verandas has quickly established itself as the Premium Veranda, Glass Room and Awning company in the West Midlands.

We offer a range of bespoke products at extraordinary value, enhancing any home or outdoor living space, from composite decking to heaters, awnings, verandas and glass rooms. The team at Fleming Verandas know just how important your new outdoor project is to you, and that is why we always guarantee an experience you'll enjoy almost as much as sitting under your beautiful fabric roof.

Specialising in outdoor solutions to suit every home and business we've helped everyone from families looking to enjoy their gardens more, to restaurants and pubs looking to increase the ways they support and attract customers with high-end commercial awnings. Our

dedication to the outdoor space has even ranged into the public sector by providing fully mechanical, electric awnings to both schools and charities.

We care about you, your home and your garden and we are committed to delivering high-end services that benefit our local community, and to protecting our local flora and fauna. That's why we've partnered with The Wildlife Trust for Birmingham and the Black Country, because it's not just about making outdoor spaces look nice, but about keeping them inhabitable for all creatures, big and small. 1% of all our net profits go to helping this fantastic charity.

Our ethos

At Fleming Verandas, we don't make false promises, we always give a fair price and deliver our best each and every time. We don't believe in sales, we believe in offering our customers our best price all year round. We trust our team, we believe in our product, and we love our customers. That's why when you speak to us about building your dream outdoor living space, you can expect a no-pressure conversation on how we can help you achieve just that.

CONTENTS



WHY WEINOR? 5

Premium quality and intelligent design

OUR PROCESS 6

How we bring your dream design to life

FINANCING OPTIONS 7

Flexible plans to help you create your perfect outdoor space

CUSTOMISE YOUR AWNING 8

Make your awning your own with a wide array of options

OPAL II AWNING 10

A sophisticated design in a timeless, classic fashion

KUBATA 13

The cubed look for the modern home

SEMINA LIFE 14

The all-rounder to fit anybody's taste

CASSITA II 17

Ultra-slim cassette, a sleek and minimalist design

PLAZA VIVA 18

The bridge between a veranda and an awning

FABRIC RANGES 20

Take a look at our extensive colour range

HELPING OUR PLANET 22

How together we can help our planet

VISIT US 23

See our range at the Hollybush Garden Centre and discuss your project with our experts

WHY weinor?

1 An established, reputable brand

Founded in 1960, Weinor is one of Europe's premier awning manufacturers. Renowned for their commitment to quality and innovation, Weinor continues to set industry standards with their premium shading solutions.

2 Intelligence and innovation

Weinor seamlessly integrates the latest innovations into their awnings, ensuring a user-friendly experience. From intuitive motorization systems to smart control features, Weinor prioritizes intelligent design to enhance functionality and provide effortless and enjoyable use of their shading solutions.

3 Quality and reliability

Every awning is crafted with precision, using only high-quality, durable materials to ensure their longevity and resist adverse weather conditions. This is why Fleming Verandas have chosen to partner with Weinor. We believe quality begins with the manufacturing process, and customers should only be offered the best when it comes to outdoor living.

4 Outstanding products

The Weinor brand guarantees quality, each and every time. From the powder-coated aluminium cassettes to the stitched Italian fabrics and their range of optional features, they offer customers only the finest quality in outdoor living solutions.



Premium quality
made in Germany



OUR PROCESS

Six simple steps to your dream outdoor space...

6

1 Get inspired

View our website, visit our Facebook or Instagram pages or visit us at our showroom.

2 Discuss your ideas

Why not pop into our showroom and have a chat in person? Alternatively, give us a call, email, or drop us a message and arrange your virtual appointment.

3 Book your home design visit

Once we have talked through your requirements and provided you with an estimate we will arrange to come and visit in person.

4 Place your order

We will confirm all your details and place your order with our manufacturing team.

5 Get excited

Once you have placed your order, we will advise you of your installation date and keep you informed throughout the entire process.

6 Sit back and relax

Once our team have completed your installation, they will provide you with a satisfaction survey. They will ensure you are completely happy before we leave, ready for you to relax in your new outdoor living space.

FINANCING OPTIONS

Eager to transform your outdoor space? With a range of finance options now available, you can begin your outdoor project sooner than you think!

1 How do I apply?

Applying's easy! Once you've agreed on the project with our sales managers, they can send you a link to an online application form.

2 Eligibility criteria

You must be an 18+ UK resident, with a valid email address, telephone number, and UK bank account. Finance is subject to application, your financial circumstances, and borrowing history.

3 Information required

Our finance provider will ask you to provide information including your residential status and home address, occupation, bank account details, as well as your income and expenditure details as part of their application process.

4 Additional information

Once an application has been received, it will be processed by our finance provider, who will notify you directly of their decision. They may require additional verification checks, including proof of income.

7

FINANCE EXAMPLES

9.9% APR Representative Example

Cost of Goods/Services	£1,200.00
Deposit	£120.00
Loan Amount	£1,080.00
Term	12 Months
Monthly Repayments	£94.68
APR (Fixed)	9.9%
Total Charge For Credit	£56.16
Total Repayable	£1,256.16

15.9% APR Representative Example

Cost of Goods/Services	£7,000.00
Deposit	£700.00
Loan Amount	£6,300.00
Term	24 Months
Monthly Repayments	£304.99
APR (Fixed)	15.9%
Total Charge For Credit	£1,019.76
Total Repayable	£8,019.76

Fleming Verandas UK Limited is registered in England and Wales, company number 12691620. We are a credit broker, not a lender. Fleming Verandas UK Limited is authorised and regulated by the Financial Conduct Authority (FRN 995953). We do not charge you for credit broking services. We will introduce you to loan products provided by Buyline Limited. Buyline Limited is authorised and regulated by the Financial Conduct Authority (FRN 805162). However, credit agreements that are interest-free and less than twelve months are unregulated. Registered office: B12 Elmbridge Court, Cheltenham Road East, Gloucester, GL3 1JZ. Registered at Companies House Number 11223350. Credit is subject to age, status, and affordability checks. Any late or missed repayment may have serious consequences and your credit rating may be affected, which could make it more difficult to obtain credit in the future.

CUSTOMISE YOUR AWNING

With a wide range of options and accessories, you can customise your awning to suit your tastes and needs.

Weinor awnings are a fantastic addition to any home and can be customised to suit your personal requirements and designs.

With a choice of over 56 RAL colours for the cassette and 155 fabric options, plus cassette mounted LEDs, you can personalise your awning to match the style of your home and garden.

The options don't stop there. Weinor awnings can be customised with integrated infrared heaters, and remote-operated valances for flexible shading. If you really want to protect your awning - or you're a little forgetful - you can include a vibration sensor that will automatically retract your awning should it become too windy.

Customise your awning and then sit back and relax, knowing you chose the best.

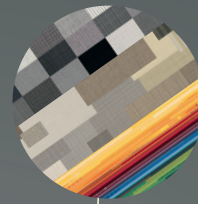
BISENS WEATHER SENSORS

With integrated sensors, your remote awning will retract when the winds are too strong, or when the rainfall and the external conditions are too dangerous



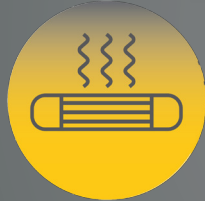
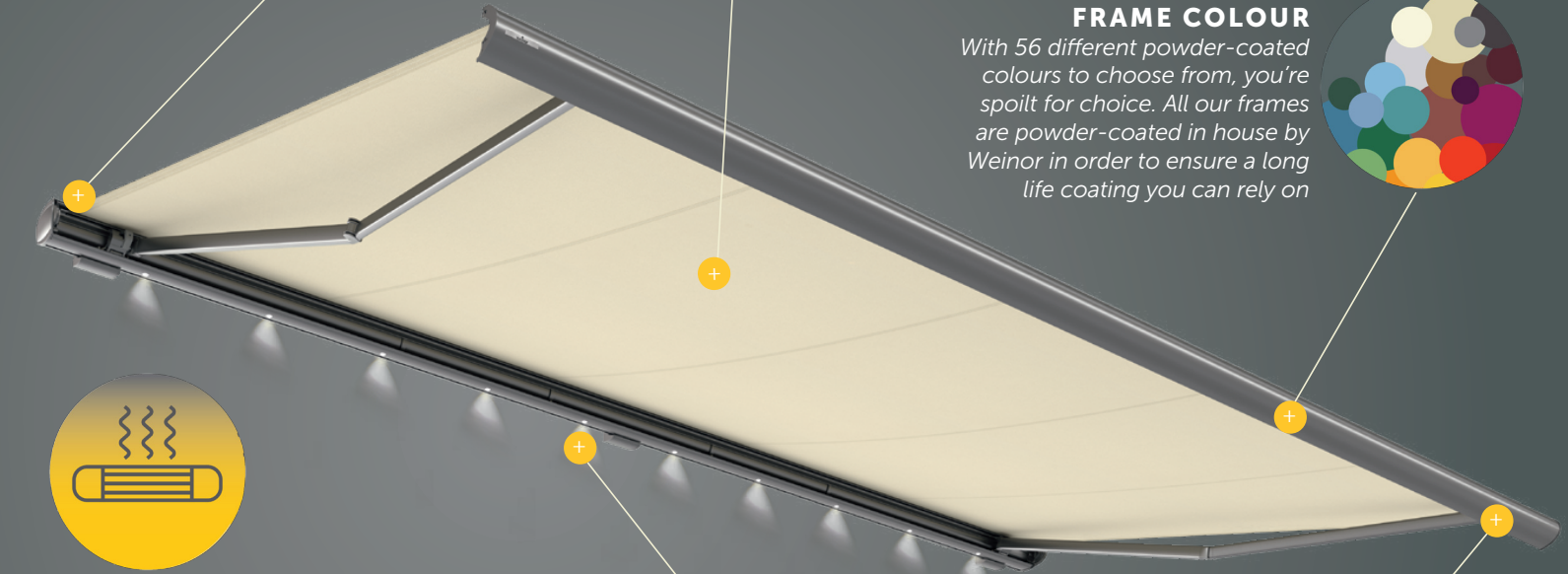
FABRIC COLOUR

Available in up to 155 colours, our fabrics are dyed in house by Weinor using their own innovative techniques that allows for long lasting, vibrant colours



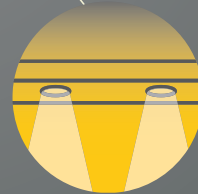
FRAME COLOUR

With 56 different powder-coated colours to choose from, you're spoilt for choice. All our frames are powder-coated in house by Weinor in order to ensure a long life coating you can rely on



HEATERS

Add a heater to your awning and keep the family warm all year round. Our heaters are modern and stylish as well as being environmentally friendly and cost efficient



LED LIGHTING

Optional integrated LED systems allow you to make the most of your outdoor space once the sun has gone down



REMOTE CONTROL

Open and close your awning with the touch of a button



FRAME PROFILES

From the curved Semina Life to the modern, boxed Kubata, our awnings come in all shapes and sizes, so they can blend seamlessly, no matter your style of home

THE OPAL II

STYLISH, SLEEK,
CONTEMPORARY.

£3,655*

**starting price, correct at time of printing*

The Opal II seamlessly combines elegance and utility. Its sleek, contemporary design effortlessly enhances the aesthetic of any environment, while reinforced arms allow it to shade a far larger area than any awning in our range. With a range of optional upgrades from integrated LEDs to a remote-operated valance this awning is perfect for both domestic and commercial properties.

- ◆ Built in dirt and element protection for long life
- ◆ Weinor LongLife arm
- ◆ LED Lighting and Valance Plus Shades upgrades available
- ◆ Width x Projection (max.): 12 m x 4 m
- ◆ More than 155 fabric patterns and frame colours



THE KUBATA

MODERN CUBIC
DESIGN

£3,895*

**starting price, correct at time of printing*

The Kubata possesses a unique cubic design, with smooth surfaces that will effortlessly blend with modern architectural aesthetics. This design allows for unique fixings where there are special construction requirements, while the optional integrated LEDs create a soft, welcoming ambiance underneath. The Kubata is an excellent addition to modern properties.

- ◆ Linear cubic design
- ◆ Screwless aesthetic
- ◆ LED Lighting upgrades available
- ◆ Width x Projection (max.): 6.5 m x 4 m
- ◆ More than 140 fabric patterns and 200 frame colours



THE SEMINA LIFE

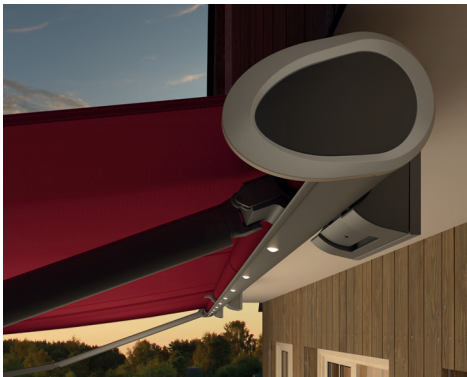
TRADITIONAL, CLASSIC AND IMPRESSIVE

£3,235*

**starting price, correct at time of printing*

The Semina Life is the perfect residential awning. Its robust cassette is complemented by a fresh, minimalist design perfect for both modern and period homes. With a range of optional upgrades including infrared heaters, a remote-operated valance, and integrated LEDs, the Semina Life is an excellent choice for sun shading.

- ◆ Stainless steel look aluminium headplate ring
- ◆ Weinor LongLife arm
- ◆ LED Lighting and Valance Plus Shades upgrades available
- ◆ Width x Projection (max.): 6.5 m x 4 m
- ◆ More than 150 fabric patterns and 200 frame colours



THE CASSITA II

ELEGANT. SLIMLINE.
TRADITIONAL.

£2,745*

**starting price, correct at time of printing*

The Cassita II is a masterful blend of style and functionality. Its slimline cassette and innovative two-point connection allow for easy integration into a range of diverse property styles. Crafted from durable and weather-resistant materials, and with several optional extras, including an LED lighting bar, the Cassita II is the perfect domestic awning.

- ◆ Stainless steel look aluminium headplate ring
- ◆ Innovative two point quick installation
- ◆ LED Lighting upgrades available
- ◆ Width x Projection (max.): 5.5 m x 3 m
- ◆ More than 155 fabric patterns and 56 frame colours



THE PLAZA VIVA

TEXTILE PERGOLA
AWNING

£4,396*

**starting price, correct at time of printing*

With the Plaza Viva textile pergola awning you can now use your patio for even longer with even less worries – virtually regardless of the weather. Whether it's as sun shade on a sunny day, as extremely stable weather protection with gusty winds or as clever rain protection from warm summer rain, thanks to the Plaza Viva you can enjoy your outdoor space, all year long.

- ◆ Optional telescopic post
- ◆ Integrated LED lighting
- ◆ Width x Projection (max.): 6 m x 5 m
- ◆ More than 140 fabric patterns and 200 frame colours



FABRIC RANGES

my collections High-quality awning fabrics

momentum

MODERN GREYS

The Momentum range

A pallet full of greys and dark tones perfect for all modern and traditional homes and gardens.

The Mélange range

Subtle and warm tones in our exclusive range of beige options. With a traditional and British feel, this range is perfect for any home.

mélange

MODERN BEIGES

Go all out!

With vibrant and eccentric colours and cross colour options, bring life and creativity to your outdoor living space!

not crazy.

MODERN COLOURS

Looking for more inspiration? See our full range on our website or come and see the fabrics for yourself at our showroom!

FRAME COLOUR OPTIONS

A bespoke finish to your unique requirements

Choose your perfect powdercoated finish:

- Up to 47 standard RAL colours and 9 scratch resistant options available as standard
- Still struggling to find something for your space? Good news – we can colour match to nearly any colour on the market.



HELPING OUR PLANET

Our partnership with The Wildlife Trust for Birmingham and the Black Country



Fleming Verandas is committed to being a positive influence in the world, and to us this goes beyond providing you a quality product that allows you to enjoy your garden with your family and friends. There are so many more ways you can enjoy your garden and have an impact on the world, to help preserve all of the UK's wonderful wildlife. Through our partnership with The Wildlife Trust for Birmingham and the Black Country we want to inspire our customers to play a role in nature's recovery.

To help achieve this goal, we have committed to donate 1% of our net profits to this wonderful charity. This structure of donations means that the better we do, the more we help; the whole team here at Fleming Verandas are enthused like never before to make sure we can help this wonderful charity

the most we can. After all, our whole brand is about outdoor living and that goes beyond just having a place to enjoy your garden from, it also means encouraging you to help wildlife thrive in your garden too.

The Wildlife Trust for Birmingham and the Black Country is one of 46 independent Wildlife Trusts working for nature's recovery across the UK. For more than 40 years, this leading urban nature conservation charity has worked to increase biodiversity, improve the environment and raise awareness and understanding of wildlife issues. For more information on this fantastic charity and the work they undertake to help preserve the wildlife right here in Birmingham and the Black Country please visit their website: bbcwildlife.org.uk



VISIT US

...at our showroom, talk to our experts and see for yourself how our extensive product range can transform your outdoor space.

Our showroom, located at the Hollybush Garden Centre in Wolverhampton, showcases our range of outdoor living solutions, and their optional accessories. Explore our range of products, and have your questions answered by our team of experts.

SHOWROOM LOCATION

Hollybush Garden Centre Warstone Road,
Shareshill Wolverhampton, WV10 7LX

OPENING TIMES

Monday-Saturday 9.00am - 5.00pm
Sundays 10.00am - 4.00pm
Bank Holidays 10.00am - 4.00pm

CONTACT DETAILS

01902 212331
sales@flemingverandas.com





FLEMING
VERANDAS